

Oberon Primary Post Issue
2, 26th February, 2026

WELCOME BACK TO SCHOOL

A WELCOME MESSAGE BY MR. MCCOOMBE,

Dear Families,

We are certainly moving through Term 1 quickly in 2026, with a lot happening across Oberon Primary School!

Bike Ed / Oberon Big Ride – What a fantastic celebration of riding, community and teamwork we experienced at this year's Bike Ed program and our annual Oberon Big Ride!

A huge thank you to all our staff and parents who have supported Bike Ed throughout the year. Programs like this simply do not happen without the time, care and commitment of our school community. Under the outstanding tutelage and organisation of Mr Brown, last Friday's Big Ride was an enormous success. The preparation, skill development and safety focus leading into the event ensured that our students rode with confidence and pride.

We were also incredibly fortunate to have the support of one of our Oberon Primary School parents, Mr Andy Sherry from the police force. Andy generously organised for several police vehicles to be on hand for the ride, giving our students the opportunity to explore the vehicles and speak with officers about road safety.



DATES FOR THE DIARY

March

2nd – 5/6 Summer Lightening Prem
6th – Assembly (2:45pm)
9th – Labour Day Public Holiday
11th – 17th – Naplan
18^h – Oberons 3–6 Cross Country
20th – Assembly (2:45pm)
20th – Prep Grandparents Morning
23rd – 27th – Swimming Program

APRIL

2nd – Last Day of Term 1 (2:30pm FINISH)



I acknowledge the Wadawurrung people as the traditional owners of the land. I pay my respects to Elders past, present and emerging, and acknowledge Aboriginal and Torres Strait Islanders as the first people of Australia.

ADDRESS: 28 DOROTHY AVENUE, BELMONT, VIC 3216
EMAIL: OBERON.PS@EDUCATION.VIC.GOV.AU
PHONE: (03) 5243 1613



Oberon Primary Post Issue 2, 26th February, 2026

The highlight for many was the very special helicopter flyover — an unforgettable moment that created plenty of excitement across Oberon Primary School!

Thank you to Andy, Sophie Gilbert, Melissa and Caleb Edhouse, and our wonderful staff for helping to deliver such a fantastic and safe riding experience for our students and families. Events like the Oberon Big Ride showcase the strength of the Oberon Primary School community and the wonderful opportunities we can provide when we work together.

We are incredibly proud of our students for the way they represented Oberon Primary School — demonstrating resilience, responsibility and great sportsmanship throughout the day.

NAPLAN – Year 3 & Year 5 Students – Our Year 3 and Year 5 students are currently participating in the annual NAPLAN assessment, a standardised test undertaken by students across Australia. NAPLAN serves as a tool to gauge aspects of student achievement and provides insights into educational progress nationally.

At Oberon Primary School, we believe that true learning encompasses growth, personal achievement, friendships and social development — elements that are not measured by NAPLAN. As our Year 3 and Year 5 students undertake their NAPLAN assessments, we extend our best wishes. However, it is important to recognise that the test is just one aspect of their academic journey, taking place on a particular day. It is not the sole indicator of who they are as learners.

You can support your child by reassuring them that NAPLAN is simply part of their school program and reminding them to do their best on the day.

Parent information can be viewed via the VCAA website:

<https://www.vcaa.vic.edu.au/assessment/foundation10/naplan/information-parents-and-carers>.

Accident Insurance, Medical Expenses and Ambulance Cover – Please note that the Department (which includes Oberon Primary School) does not provide personal accident insurance. Items of personal property that are lost, stolen or damaged at school are not the responsibility of Oberon Primary School or the Department. Staff and students are reminded not to bring valuable items to school.

Parents and carers are responsible for any medical expenses (including ambulance costs) incurred if their child is injured or requires medical treatment or ambulance attendance while at school or participating in a school activity.

Please also note that parents/carers may not be contacted until after an ambulance has been called, depending on the situation. We encourage all families to ensure they have up-to-date ambulance cover and appropriate medical insurance.

Mobile Phones and Smart Watches – A reminder that under the state-wide policy on mobile phones in Victorian Government schools, all students at Oberon Primary School are required to turn off and hand in mobile phones and smart watches during school hours so they can focus on their learning. Devices are stored securely at the start of the day and returned at the end of the day by staff.

Please discuss this requirement with your child to assist us in following this policy. We thank you for your ongoing support.

5

Tips for students completing

NAPLAN

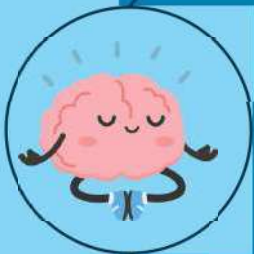


REMEMBER

- It's just one test on one day.
- It does NOT define you.
- Your job is to try your best - that's all!

BEFORE YOU START

- Take 4 Calm Breaths
- Breathe in... 2, 3, 4
- Hold... 2, 3, 4
- Breathe out... 2, 3, 4



IF YOUR BRAIN SAYS

× "I can't do this."

☞ Say: "I'll just do my best."

× "This is too hard."

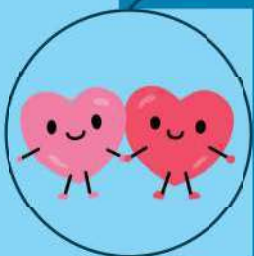
☞ Say: "I can try the next question."

× "Everyone else is faster."

☞ Say: "I'll work at my own pace."

DURING THE TEST

- ✓ Read each question carefully
- ✓ Skip tricky ones and come back
- ✓ Answer every question
- ✓ Check your work if you have time



REMINDER

- You are more than a score.
- You are capable.
- You are growing every day.
- ✨ Just take it one question at a time. ✨

OUR OBERON LEADERS



HOUSE CAPTAINS

ARIA WEBBER

MAVRICK HENDERSON

RHYS AUHL

BILLY SACK

ANGUS WALKER

HEDIE TALBOT

CHARLOTTE CLUTTERBUCK

LINCOLN MCGUINNESS

SCHOOL CAPTAINS

NEVE SASULU

TOM SIDEBOTTOM

VICE CAPTAINS

MAEVE JOHNSON

HARRY QUIRKE

OUR SRC REPS



SRC MEMBERS OF 2026! THE OBERON SRC'S (STUDENT REPRESENTATIVE COUNCIL) ARE A TEAM OF RESPONSIBLE, RESPECTFUL AND CARING STUDENTS WHO WILL COLLABORATE TOGETHER AND GIVE VOICE TO THE STUDENT BODY THIS YEAR. THEIR ROLE IS TO LISTEN TO THE PERSPECTIVES AND OPINIONS OF THEIR PEERS AT OBERON, AND TAKE ACTION BY COMING TOGETHER TO CREATE SOLUTIONS, ORGANISING FUNDRAISERS AND SPECIAL EVENTS. CONGRATULATIONS TO THOSE STUDENTS WHO HAVE BEEN ELECTED!



MEET THE TEAM

5/6B - KYAL & XANTHI

5/6C - OLIVIA & SIENNA

5/6T - LUCAS & MATILDA

3/4G - BEA & AAYAH

3/4A - SAMARA & JUKE

3/4C - QUINN & LEIA

1/2R - PIPPA & HAMISH

1/2S - RAUIRI & NORA

PS- MINA & JACK

PJ- KATE & EDWARD

STARTING RIGHT!



CONGRATULATIONS TO ALL OUR STARTING RIGHT AWARD WINNERS. STARTING RIGHT IS AWARDED TO STUDENTS WHO HAVE MADE AN OUTSTANDING START TO THE SCHOOL YEAR!

BIKE ED PROGRAM



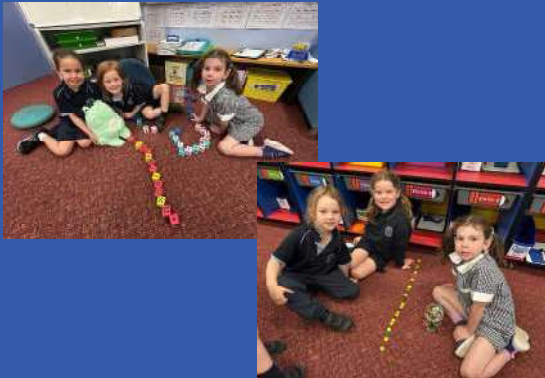
The Grade 5/6 students on their grand voyage!



Spotlight on Learning



Preps!



Our Preps are learning to order in Maths!

1/2s!



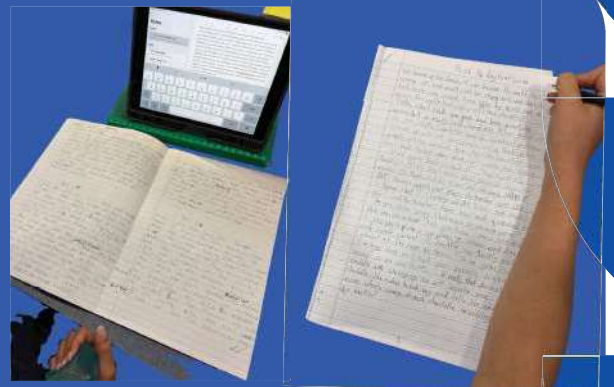
Our 1/2s have been working hard on phonics, focusing on the tricky 'er, ur & ir'

3/4s!



Our 3/4s have been using their integrated topic, 'Unique Me', to create Cultural Jars.

5/6s!

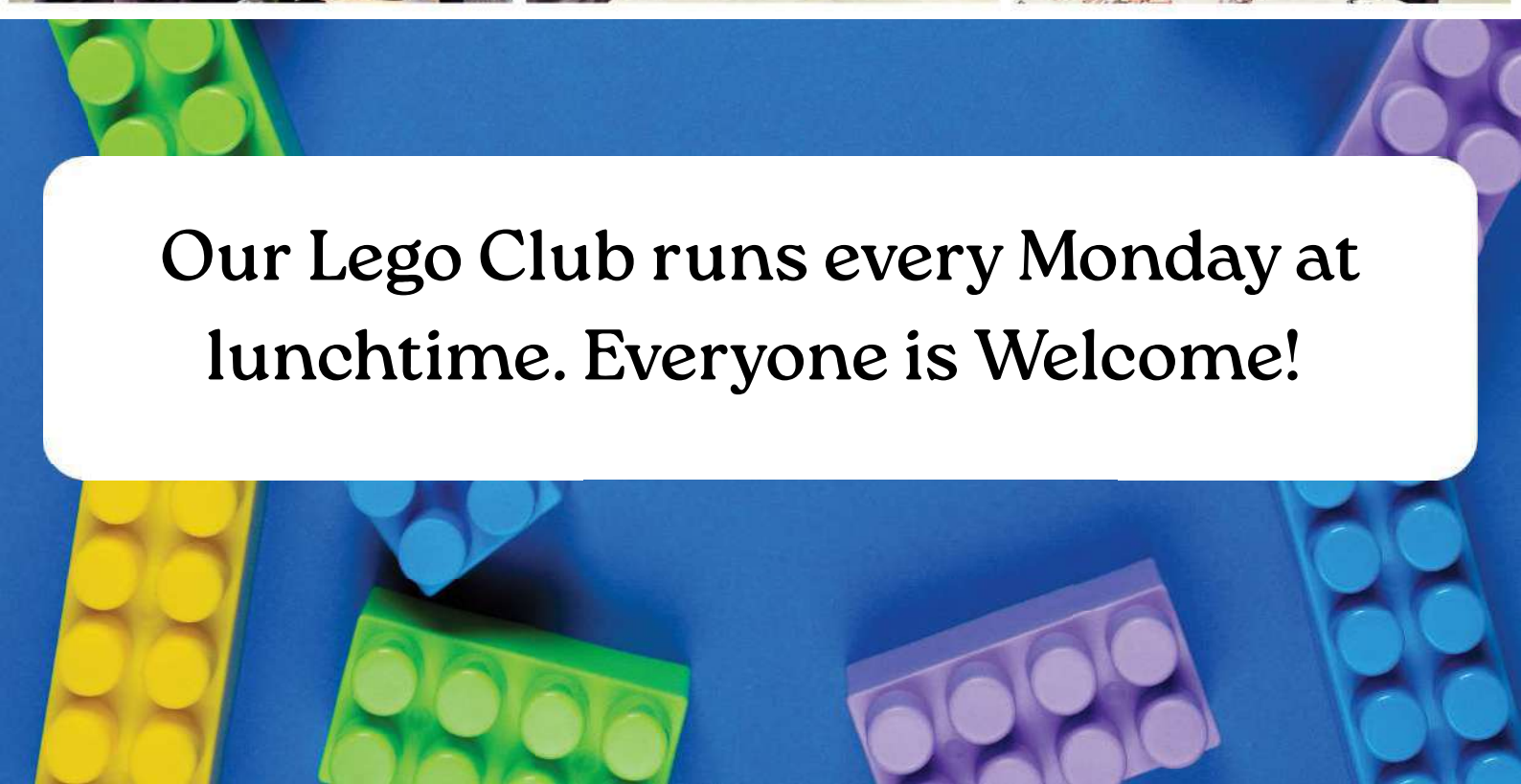


Our 5/6s have been using the book 'The Day My Bum Went Psycho' to write their own narratives..

A great start to the year across all learning environments!



Lego Club!



Our Lego Club runs every Monday at lunchtime. Everyone is Welcome!



TheirCare
Where Kids love to be!

Oberon Primary School

Social, enjoyable & fun experiences for children

Develop creativity, life skills & confidence through play

Qualified, caring & engaged staff

Exciting & thoughtfully developed programs

Healthy & Yummy food provided each day

☀ Bookings now open! ☀

	Monday - Friday Hours of Operation	Fees before Child Care Subsidy*	Out-of-pocket fees after Child Care Subsidy**
Before School Care (BSC)	7:00 AM to 8:45 AM	\$25.00	\$5.30
After School Care (ASC)	3:15 PM to 6:00 PM	\$35.00	\$4.04
Pupil Free Day	7:00 AM to 6:00 PM	\$75.00	\$7.50

*Standard fee costs before Child Care Subsidy | ** Standard fee costs after maximum Child Care Subsidy

Cancellation Fees

(No Child Care Subsidy applied to Cancellation Fees)

BSC/ASC within 24 hours of session start time: **\$4.00**

Same day cancellation fee is out-of-pocket session fee.

Late Booking Fees

(Child Care Subsidy is applied to Late Booking Fees)

BSC/ASC within 24 hours of session start time: **\$4.00**

Late Pick-up Fees

(Child Care subsidy does not apply to Late Pick-up Fees)

\$1 per minute after service close time.

To register visit theircare.com.au



Service phone number:
0401 101 534

Your service Coordinator will be available during session times.

Save up to 90% with child care subsidy



TheirCare support team is available between 6.30am - 9pm weekdays (Eastern Standard Time) on **1300 072 410** or info@theircare.com.au



Presenters:

Jeremy O'Sullivan

Swimming Australia Para Swimming
Development Manager

Travis Zimmer

Leisure Networks & City of Greater
Geelong

Disability Inclusion Sport Coordinator



SWIMMERS WITH DISABILITY INFORMATION SESSION

FOR COACHES, LEARN TO SWIM, TEACHERS, ALLIED HEALTH & DISABILITY PROVIDERS



SATURDAY 14 MARCH



12.30 - 2.30PM



NORLANE ARC, 9 COX RD NORLANE

Swimming is one of the few sports that requires minimal adjustments for people with disability to take part. Learn more about the swimming pathways available, what classification means and the inclusive behaviours required to support people with disability to participate in the sport of swimming.

REGISTER HERE





Year 7 2027 enrolment applications now open.



Melbourne Archdiocese
Catholic Schools



Saint Ignatius
College Geelong



***“I’m unlocking
my potential”***

**OPEN
DAYS
2026
2024
MARCH**

**DISCOVER GLC FOR YOURSELF
OPENDAYS - MARCH 2026**

Register glc.vic.edu.au



**GEELONG LUTHERAN
COLLEGE**

ARMSTRONG CREEK campus | ARMSTRONG CREEK campus | ST JOHN'S NEWTOWN campus

ST JOHN'S NEWTOWN | ARMSTRONG CREEK



keyassets

SERVING CHILDREN, FAMILIES & COMMUNITIES

**Can
you
help?**

**FOSTER CARERS
NEEDED IN VICTORIA.**

Take our 2-min quiz at Canifoster.com.au
or call us on **1800 932 273**